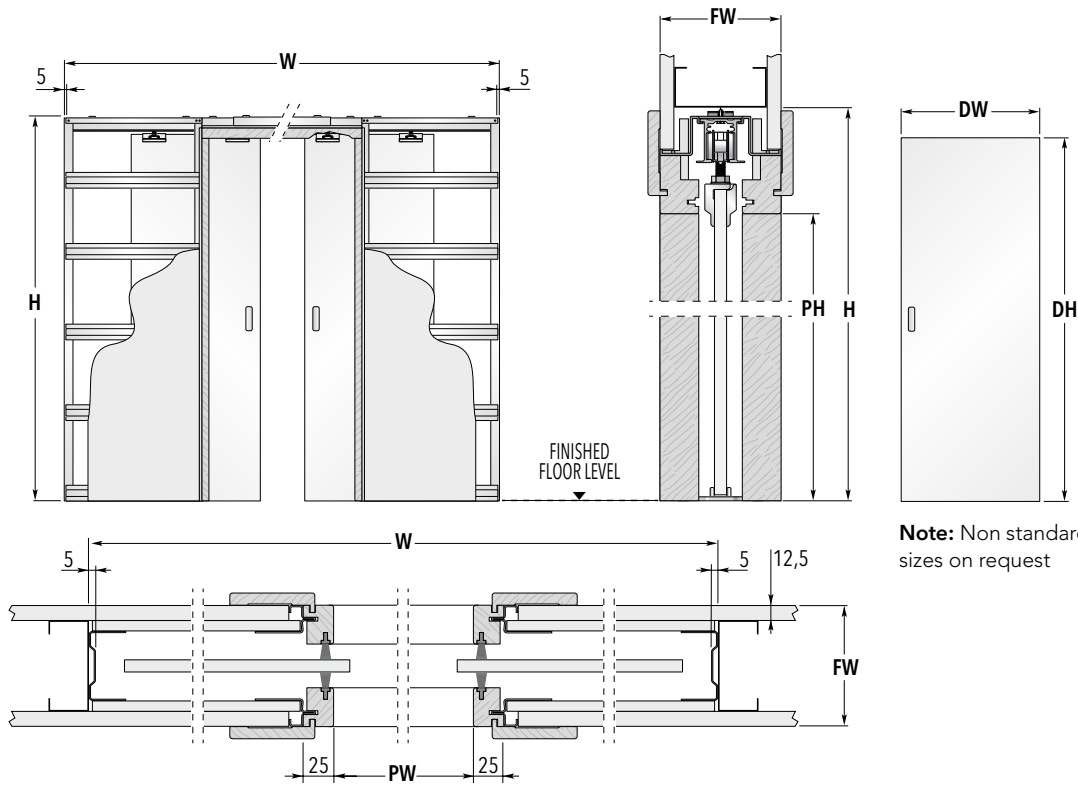


GLASS POCKET DOOR DOUBLE

DOUBLE POCKET DOORS SYSTEM



Note: Non standard sizes on request

FRAMES FOR DOUBLE DOORS			GLASS DOOR PANELS*	
MAX. PASSAGE SIZE PW x PH	OVERALL DIMENSION W x H	FINISHED WALL FW	DW	DH
1200 x 2030	2494 x 2115	95 - 100 - 115 - 125	626	2040
1400 x 2030	2894 x 2115	95 - 100 - 115 - 125	726	2040
1600 x 2030	3294 x 2115	95 - 100 - 115 - 125	826	2040
1800 x 2030	3694 x 2115	95 - 100 - 115 - 125	926	2040
2000 x 2030	4094 x 2115	95 - 100 - 115 - 125	1026	2040
1170 x 1971	2464 x 2056	95 - 100 - 115 - 125	2ft. 0in. x 6ft. 6in. (610 x 1981 mm)	
1322 x 1971	2816 x 2056	95 - 100 - 115 - 125	2ft. 3in. x 6ft. 6in. (686 x 1981 mm)	
1474 x 1971	3168 x 2056	95 - 100 - 115 - 125	2ft. 6in. x 6ft. 6in. (762 x 1981 mm)	
1626 x 1971	3320 x 2056	95 - 100 - 115 - 125	2ft. 9in. x 6ft. 6in. (838 x 1981 mm)	
1800 x 1971	3694 x 2056	95 - 100 - 115 - 125	3ft. 0in. x 6ft. 6in. (914 x 1981 mm)	
1350 x 1971	2844 x 2056	95 - 100 - 115 - 125	2ft. 4in. x 6ft. 6in. (711 x 1981 mm)	
1550 x 2020	3244 x 2105	95 - 100 - 115 - 125	2ft. 8in. x 6ft. 8in. (813 x 2032 mm)	
1700 x 2020	3594 x 2105	95 - 100 - 115 - 125	2ft. 10in. x 6ft. 8in. (864 x 2032 mm)	

Dimensions are given in mm



NOTES

- ▶ Non standard sizes available up to PW 4000 x PH 2400 or PW 3000 x PH 2900mm.
- ▶ Supplied with 10mm glass door fully tempered to the latest European specifications.
- ▶ 8mm satin finish glass available in DW 762 x DH 1981 and DW 826 x DH 2040mm only.
- ▶ Low iron glass available on request (10mm only).
- ▶ Satin glass, Sandblasted patterns, Murano glass inserts, coloured glass all available.
- ▶ Includes full timber lining kit for a professional finish.
- ▶ Plasterboard and final architrave not supplied.
- ▶ When fitting flush pull handles we recommend the stop be regulated so the door protrudes from the pocket to avoid risk to fingers.
- ▶ Should the door be set to enter the pocket completely we do not accept any liability.
- ▶ Install at finished floor level.
- * Nominal size.



ACCESSORIES

- ▶ **Door Furniture**
Flush pulls and bathroom locks
- ▶ **ECLISSE BIAS®**
Soft close up to 40 kg with anti-slam*
- ▶ **ECLISSE BIAS® DS**
Bi-directional soft close up to 40 kg with anti-slam*

* Above a door panel weight of 40 kg the anti-slam will still work but the door may not close completely against the doorpost of its own accord.