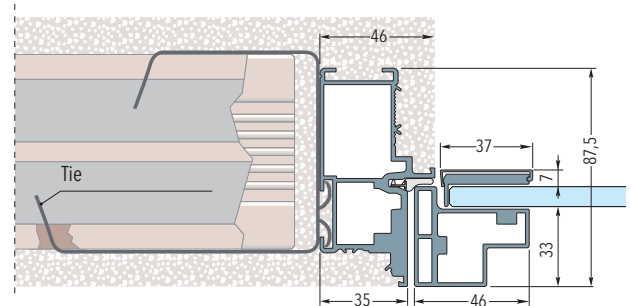
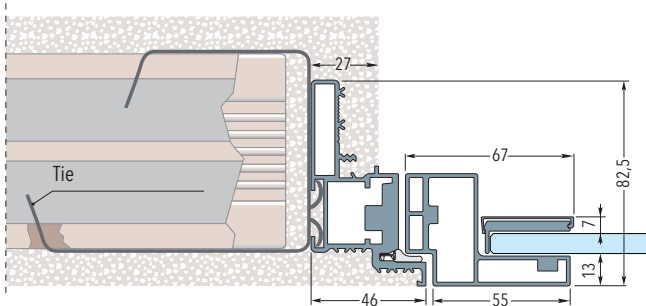


SYNTESIS® FLUSH GLASS HINGED DOOR

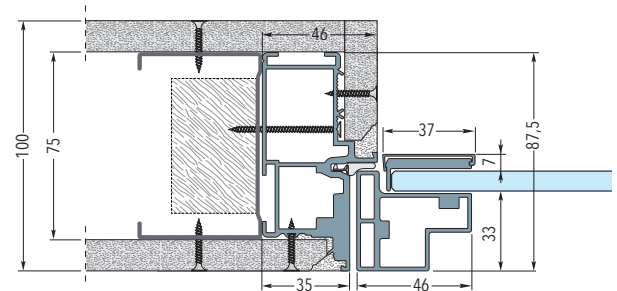
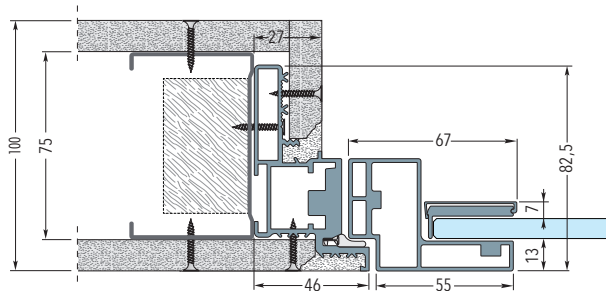
PUSH DOOR

PULL DOOR

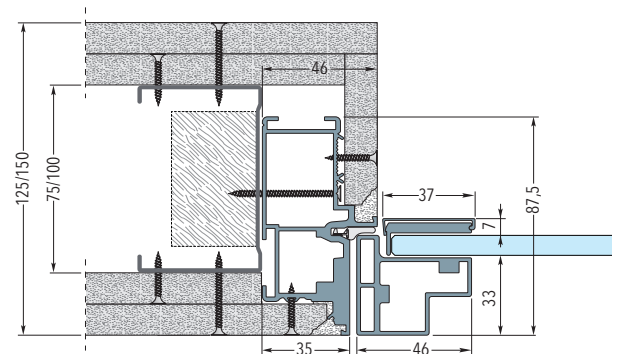
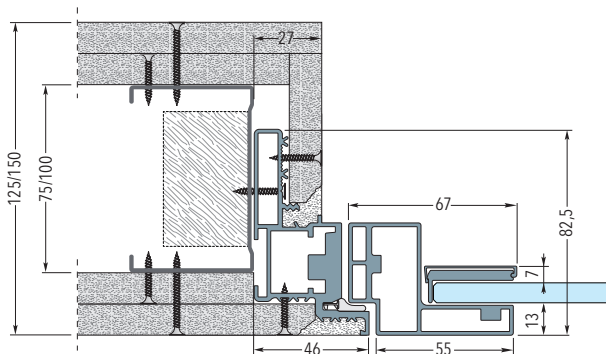
Solid wall



Stud wall with one layer of plasterboard - Finished wall thickness 100 mm



Stud wall with two layers of plasterboard - Finished wall thickness 125/150 mm



The frame is designed for use with solid or stud walls.

For solid walls use the 6 adjustable ties to locate the frame. For stud walls screw into the stud through the specifically designed holes.



NOTES

- ▶ Supplied with 8 mm glass door fully tempered to the latest European specifications.
- ▶ Transparent, satin, transparent grey, satin grey, transparent bronze, satin bronze or sandblasted patterns. Low iron glass available on request.
- ▶ Available in non standard sizes up to opening 1010 x 2700 mm.
- ▶ Glass doors recessed by different amount depending on whether they are push or pull versions (see drawing).
- ▶ See www.eclisse.co.uk for all stud size options.
- ▶ Install at finished floor level.
- ▶ Comes with seals, magnetic door latch, strike plate, vertical aluminium anodised trim.
- ▶ Handle not included.
- ▶ Plasterboard not supplied.

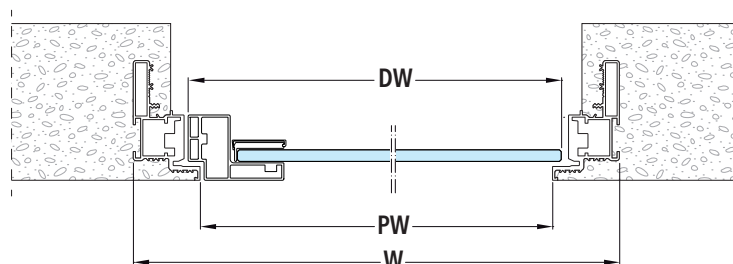
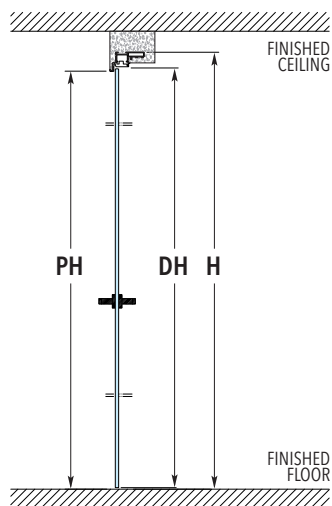


ACCESSORIES

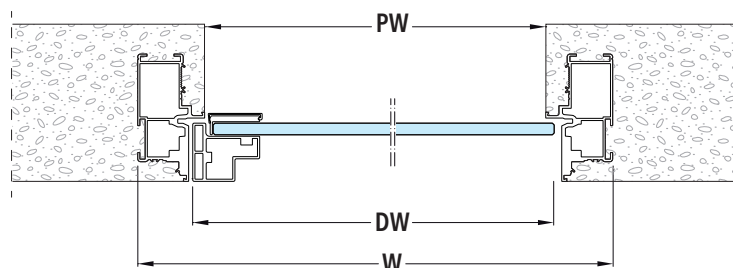
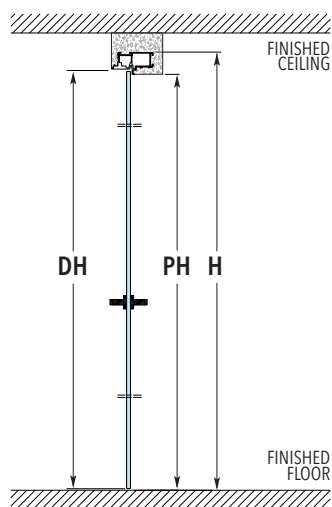
- ▶ **Door Furniture**
Handles

SYNTESIS® FLUSH GLASS HINGED DOOR

PUSH DOOR



PULL DOOR



FRAMES FOR SINGLE HINGED DOORS

GLASS DOOR PANEL

MAX. PASSAGE SIZE PW x PH	OVERALL DIMENSION W x H	DW	DH	Nominal Ref
610 x 2036	702 x 2082	624	2034	626 x 2040
710 x 2036	802 x 2082	724	2034	726 x 2040
810 x 2036	902 x 2082	824	2034	826 x 2040
910 x 2036	1002 x 2082	924	2034	926 x 2040
1010 x 2036	1102 x 2082	1024	2034	1026 x 2040
594 x 1977	686 x 2023	608	1975	610 x 1981
670 x 1977	762 x 2023	684	1975	686 x 1981
746 x 1977	838 x 2023	760	1975	762 x 1981
822 x 1977	914 x 2023	836	1975	838 x 1981
898 x 1977	990 x 2023	912	1975	914 x 1981
695 x 1977	787 x 2023	709	1975	711 x 1981
797 x 2028	889 x 2074	811	2026	813 x 2032
848 x 2028	940 x 2074	862	2026	864 x 2032

Dimensions are given in mm