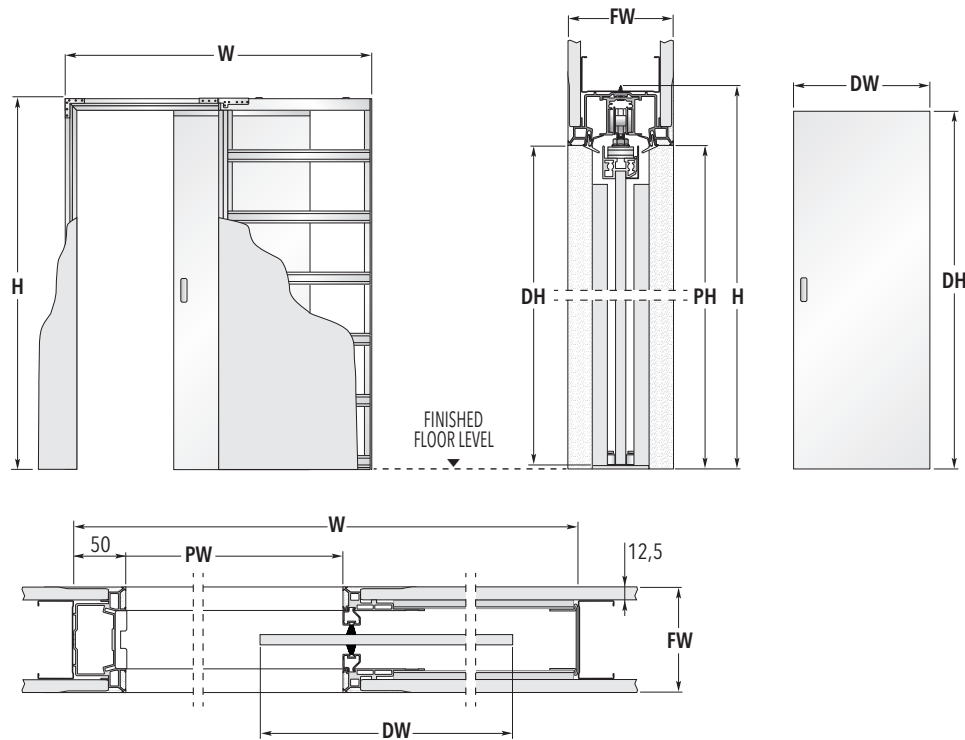
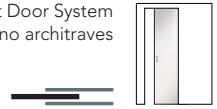


SYNTESIS® FLUSH GLASS SINGLE

SINGLE GLASS FLUSH POCKET DOORS SYSTEM



| FRAMES FOR SINGLE DOORS | | | GLASS DOOR PANEL* | |
|------------------------------|----------------------------|---------------------|----------------------------------------|------|
| MAX. PASSAGE SIZE PW x PH | OVERALL DIMENSION W x H | FINISHED WALL FW | DW | DH |
| 600 x 2048 | 1385 x 2108 | 100 - 125 - 150 | 626 | 2040 |
| 700 x 2048 | 1585 x 2108 | 100 - 125 - 150 | 726 | 2040 |
| 800 x 2048 | 1785 x 2108 | 100 - 125 - 150 | 826 | 2040 |
| 900 x 2048 | 1985 x 2108 | 100 - 125 - 150 | 926 | 2040 |
| 1000 x 2048 | 2185 x 2108 | 100 - 125 - 150 | 1026 | 2040 |
| 584 x 1989 | 1369 x 2049 | 100 - 125 - 150 | 2ft. 0in. x 6ft. 6in. (610 x 1981 mm) | |
| 660 x 1989 | 1545 x 2049 | 100 - 125 - 150 | 2ft. 3in. x 6ft. 6in. (686 x 1981 mm) | |
| 736 x 1989 | 1721 x 2049 | 100 - 125 - 150 | 2ft. 6in. x 6ft. 6in. (762 x 1981 mm) | |
| 812 x 1989 | 1797 x 2049 | 100 - 125 - 150 | 2ft. 9in. x 6ft. 6in. (838 x 1981 mm) | |
| 888 x 1989 | 1973 x 2049 | 100 - 125 - 150 | 3ft. 0in. x 6ft. 6in. (914 x 1981 mm) | |
| 675 x 1989 | 1560 x 2049 | 100 - 125 - 150 | 2ft. 4in. x 6ft. 6in. (711 x 1981 mm) | |
| 775 x 2040 | 1760 x 2100 | 100 - 125 - 150 | 2ft. 8in. x 6ft. 8in. (813 x 2032 mm) | |
| 825 x 2040 | 1910 x 2100 | 100 - 125 - 150 | 2ft. 10in. x 6ft. 8in. (864 x 2032 mm) | |

Dimensions are given in mm



NOTES

- ▶ Supplied with 10 mm glass doors fully tempered to the latest European specifications.
- ▶ Low iron glass available on request.
- ▶ Satin glass, Sandblasted patterns, Murano glass inserts, coloured glass all available.
- ▶ Available in non standard sizes up to opening 1300 x 2700 mm.
- ▶ Passage sizes above 1000 mm wide and 2150 mm high must be 125 or 150 mm finished wall thickness, these are separate versions and require 2 layers of 12.5 mm plasterboard each side.
- ▶ Install at finished floor level.
- ▶ Plasterboard not supplied.
- ▶ When fitting flush pull handles we recommend the stop be regulated so the door protrudes from the pocket to avoid risk to fingers.
- ▶ Should the handle choice allow the door be adjusted to enter the pocket completely we do not accept any liability.

* Nominal size.



ACCESSORIES

- ▶ **Door Furniture**
Glass door furniture and locks
- ▶ **Flush Skirting Board adaptor**
- ▶ **ECLISSE BIAS®**
Soft Close anti-slam device with 40 kg soft closing
- ▶ **ECLISSE BIAS® DS**
Bi-directional soft close up to 40 kg with anti-slam