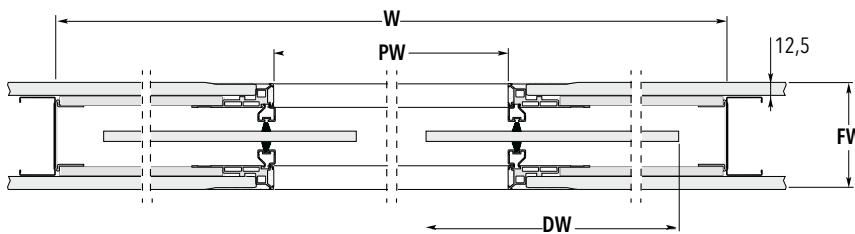
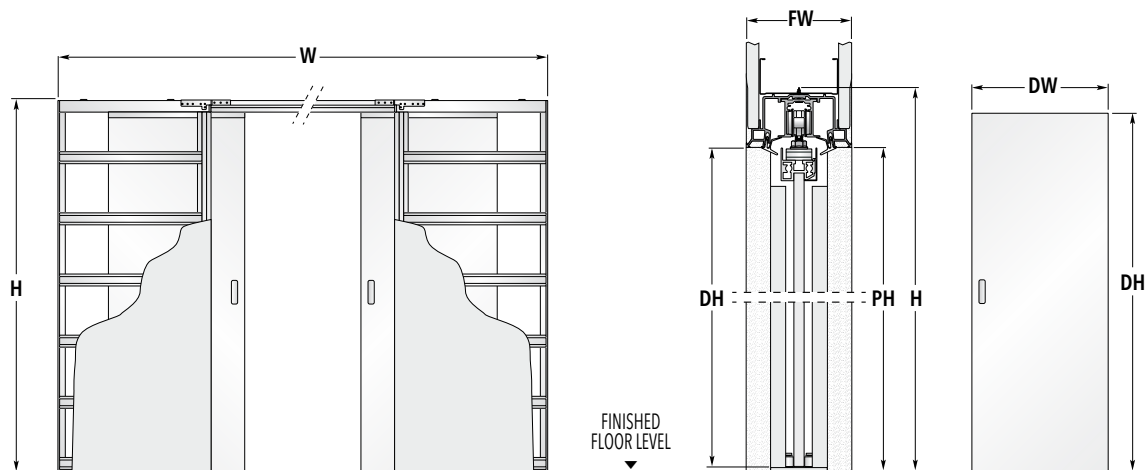


SYNTESIS® FLUSH GLASS DOUBLE

DOUBLE GLASS FLUSH POCKET DOORS SYSTEM

no jambs, no architraves



PLEASE NOTE INBUILT TOLERANCE

If setting out your studwork before delivery of your frame please note there is approximately an 8mm tolerance built into the height of these pocket door systems which you will need to take into account. Packers may be required to accommodate for this gap if you are unable to adjust the studwork above the system.

Note: Frame should be installed at finished floor level.

FRAMES FOR DOUBLE DOORS			GLASS DOOR PANEL*	
MAX. PASSAGE SIZE PW x PH	OVERALL DIMENSION W x H	FINISHED WALL FW	DW	DH
1200 x 2048	2700 x 2108	100 - 125 - 150	626	2040
1400 x 2048	3100 x 2108	100 - 125 - 150	726	2040
1600 x 2048	3500 x 2108	100 - 125 - 150	826	2040
1800 x 2048	3900 x 2108	100 - 125 - 150	926	2040
2000 x 2048	4300 x 2108	100 - 125 - 150	1026	2040
1168 x 1989	2668 x 2049	100 - 125 - 150	2ft. 0in. x 6ft. 6in. (610 x 1981 mm)	
1320 x 1989	3020 x 2049	100 - 125 - 150	2ft. 3in. x 6ft. 6in. (686 x 1981 mm)	
1472 x 1989	3372 x 2049	100 - 125 - 150	2ft. 6in. x 6ft. 6in. (762 x 1981 mm)	
1624 x 1989	3524 x 2049	100 - 125 - 150	2ft. 9in. x 6ft. 6in. (838 x 1981 mm)	
1776 x 1989	3876 x 2049	100 - 125 - 150	3ft. 0in. x 6ft. 6in. (914 x 1981 mm)	
1350 x 1989	3050 x 2049	100 - 125 - 150	2ft. 4in. x 6ft. 6in. (711 x 1981 mm)	
1550 x 2040	3450 x 2100	100 - 125 - 150	2ft. 8in. x 6ft. 8in. (813 x 2032 mm)	
1650 x 2040	3750 x 2100	100 - 125 - 150	2ft. 10in. x 6ft. 8in. (864 x 2032 mm)	

Dimensions are given in mm



NOTES

- ▶ Supplied with 10 mm glass doors fully tempered to the latest European specifications.
- ▶ Low iron glass available on request.
- ▶ Satin glass, Sandblasted patterns, Murano glass inserts, coloured glass all available.
- ▶ Available in non standard sizes up to opening 2600 x 2700 mm.
- ▶ Passage sizes above 2000 mm wide and 2150 mm high must be 125 or 150 mm finished wall thickness, these are separate versions and require 2 layers of 12.5 mm plasterboard each side.
- ▶ Install at finished floor level.
- ▶ Plasterboard not supplied.
- ▶ When fitting flush pull handles we recommend the stop be regulated so the door protrudes from the pocket to avoid risk to fingers.
- ▶ Should the handle choice allow the door be adjusted to enter the pocket completely we do not accept any liability.

* Nominal size.



ACCESSORIES

- ▶ **Door Furniture**
Glass door furniture and locks
- ▶ **Flush Skirting Board adaptor**
- ▶ **ECLISSE BIAS®**
Soft Close anti-slam device with 40 kg soft closing
- ▶ **ECLISSE BIAS® DS**
Bi-directional soft close up to 40 kg with anti-slam